

Hand Crafted Entry Doors

MADE IN A TRADITIONAL STYLE WITH MODERN TECHNIQUES

BRENLO

HISTORY

Almost thirty years in the custom wood moulding industry, Brenlo LTD has prided its self on being the benchmark for quality, innovation and service. In 2014, Brenlo expanded their product offerings by acquiring Artistic Doors. Brenlo's focus is to leverage their existing expert knowledge in wood and manufacturing to create the best quality entry door in Canada. By applying modernized manufacturing techniques along with superior craftsmanship, Brenlo brings your custom entry door vision to life.



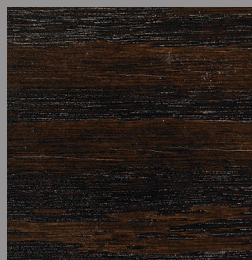
Having access to the highest quality materials is the foundation of producing your custom entry door. Brenlo sources all rough lumber from reputable FSC certified suppliers that understand the importance of high expectations when it comes to quality. Each board is hand selected by lumber experts and is checked for defects, moisture and colour consistency throughout the manufacturing process.

FINISHES

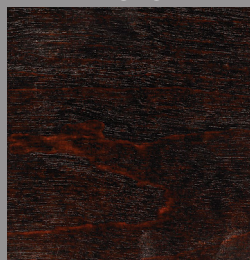
**BLACK
D506**



**BROWN MAHAGONY
W260A**



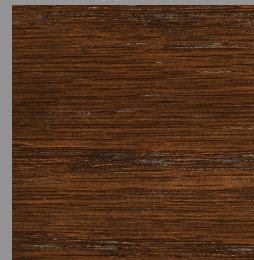
**DARK WALNUT
D529**



**BROWN WALNUT
D521**



**GUNSTOCK
W247**



Brenlo only uses the best when choosing wiping stains and non-VOC water based durable finishes. Goudey stains and lacquer are the finest recipes in the market and have been tested to withstand the tough conditions of the Canadian climate. The quality of a well-made stain combined with our own application process allows for a perfect finish every time.

A close-up photograph of a wooden entry door. The door features a traditional six-panel design with arched tops and bottoms. The wood is a medium-brown stain. On the left side, there is a black metal handle and lock assembly. The handle has a decorative, curved design. The lock is a standard deadbolt. The text "YOUR HOME IS UNIQUE YOUR ENTRY DOOR SHOULD MATCH" is overlaid in white, bold, sans-serif capital letters in the upper right quadrant of the image.

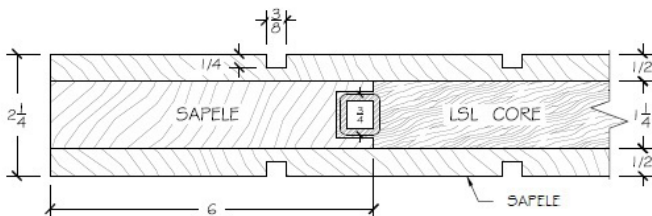
**YOUR HOME IS UNIQUE
YOUR ENTRY DOOR
SHOULD MATCH**

CUSTOM ENTRY SYSTEMS

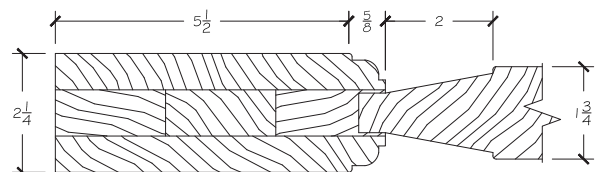
Manufacturing a modern style entry doors has its challenges, especially when it comes to stability. However, Brenlo has created a revolutionary method by inserting 3/4" tubular steel gage into the core of the door. This combined with premium lumber strain core (LSL)* allows Brenlo to manufacture any modern style requirements.

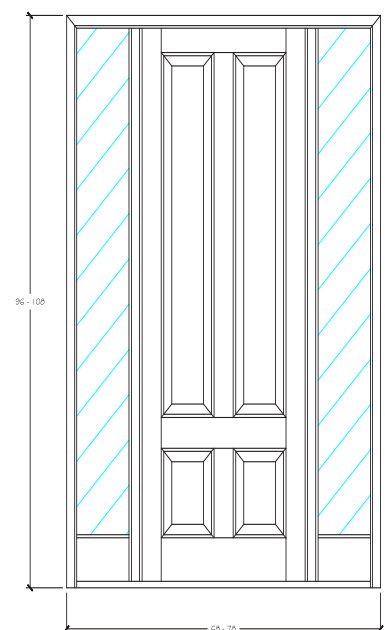
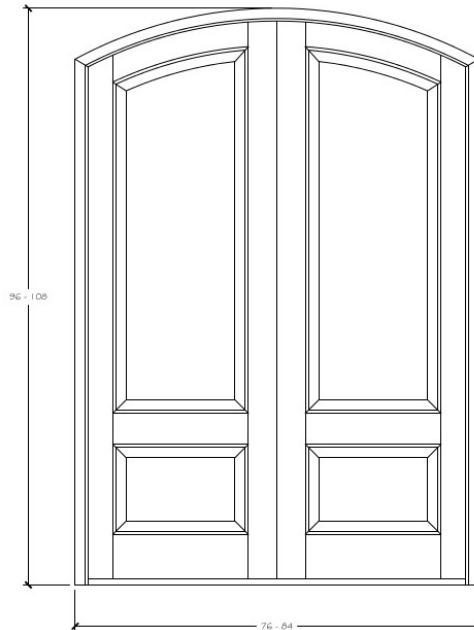
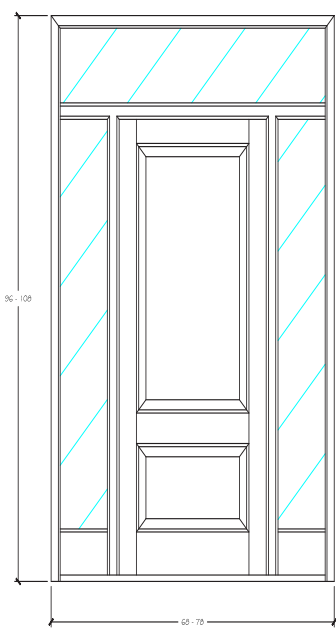
All of our traditional style entry doors are manufactured with precision dowel construction, as well as laminated cold pressed solid wood core to ensure stability. These entry systems range from a single door with a tempered glass side lite or a more complex design such as a 14-foot double entry doors system with a transom. There are endless options for traditional style entry door.

MODERN



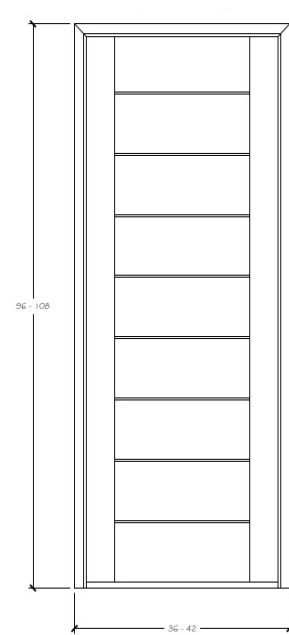
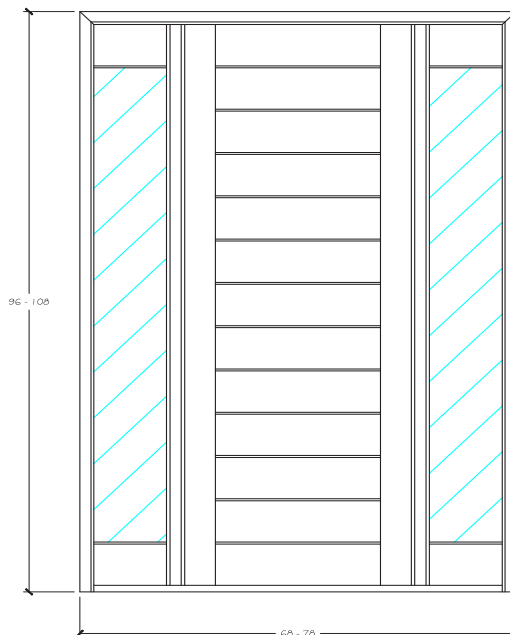
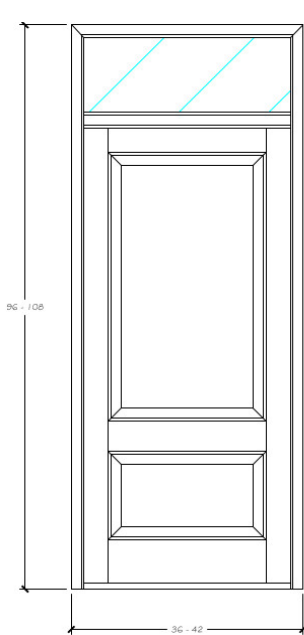
TRADITIONAL





NOT SURE WHAT STYLE ENTRY YOU REQUIRE?

We have thousands of CAD drawings in our library at your disposal to help you during your entry door process. Bring us a picture, a sketch, or an idea and our in house CAD design team will provide you with a rendered drawing to go along with your quote.



Our rough lumber selection process, state of the art CNC machining, and the best wiping stains, all take part in building the best hand crafted entry door for our customers. Every entry door receives a ten-point quality control inspection completed by our general manger. Brenlo takes pride in providing a quality entry door for your home and encourages our customers to visit the facility during the manufacturing process.

**FOR ADDITIONAL INFORMATION ON DOOR CONSTRUCTION OR DESIGN
PLEASE CONTACT US AT: SALES@BRENLO.CA**

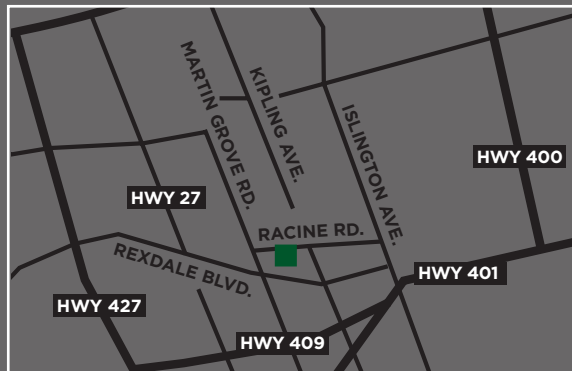
WARRANTY

Brenlo Ltd, offers a limited warranty on exterior doors for 1 year from delivery date. This warranty applies to:

- Manufacturing defects in door
- Finishing by Brenlo
- Operation of door
- Sidelight & transom glass free of defect at time of delivery

Southern facing exposures are not covered by warranty if stained a dark finish and/or insufficient overhang due to UV rays and heat buildup from those exposures. It is not recommended that a dark finish be used where a door is facing south, south-west, or west. A coat of varnish or revitalizer should be applied at least once a year to ensure the integrity of the overall finish.

For more information on Brenlo's warranty please visit:
<http://www.brenlo.com/products/artistic-doors>



41 Racine Rd. Toronto, Ontario M9W 2Z4

T 416.749.6857 F 416.749.8969

T/F 877.816.6607

Showroom Hours:

Monday - Friday 7:30am to 4:30pm

www.brenlo.com