

# BRENLO TIMES

DECEMBER EDITION

VOL 26

2024

EMPLOYEE SPOTLIGHT: VANDA VANDA

NEW TRENDS

PRODUCT SPOTLIGHT: TAMBOUR SHEET + CONCEALED CASING

## *MASTERING CUSTOMIZATION: PART 1*



# DISCOVER THE ART OF CUSTOM WOODWORK WITH BRENLO

PHOTOGRAPHY BY BRENLO MARKETING

At Brenlo, we believe that every project is unique, and your wood products should reflect that. Our commitment to craftsmanship, attention to detail, and unparalleled customization abilities make us the go-to partner for all your custom molding, trim, and door needs. Whether you're an architect, designer, home owner or builder, our tailored process ensures that you get exactly what you need to elevate your project.

## **Why choose customization with Brenlo?**

With over 30 years of experience, Brenlo is a leader in custom wood manufacturing. We specialize in providing top-quality, custom moldings, doors that fit the specific design and functional needs of your project. Our customization abilities allow us to deliver wood products that match your vision while ensuring long-lasting quality.





# PART ONE: MOULDINGS



Moldings play a vital role in enhancing the aesthetic and functional appeal of any space, serving as the finishing touch that ties design elements together. The customization process is essential in ensuring moldings align perfectly with a project's unique vision and specifications. Whether it's a modern new build that calls for sleek, contemporary profiles or a historical home renovation requiring precise replication of original trim, customization ensures a seamless integration with the architectural style. By tailoring profiles, dimensions, and finishes, designers and builders can elevate the design, adding value and character to any space while reflecting the meticulous attention to detail that makes each project truly exceptional.



# 1

## CONSULTATION

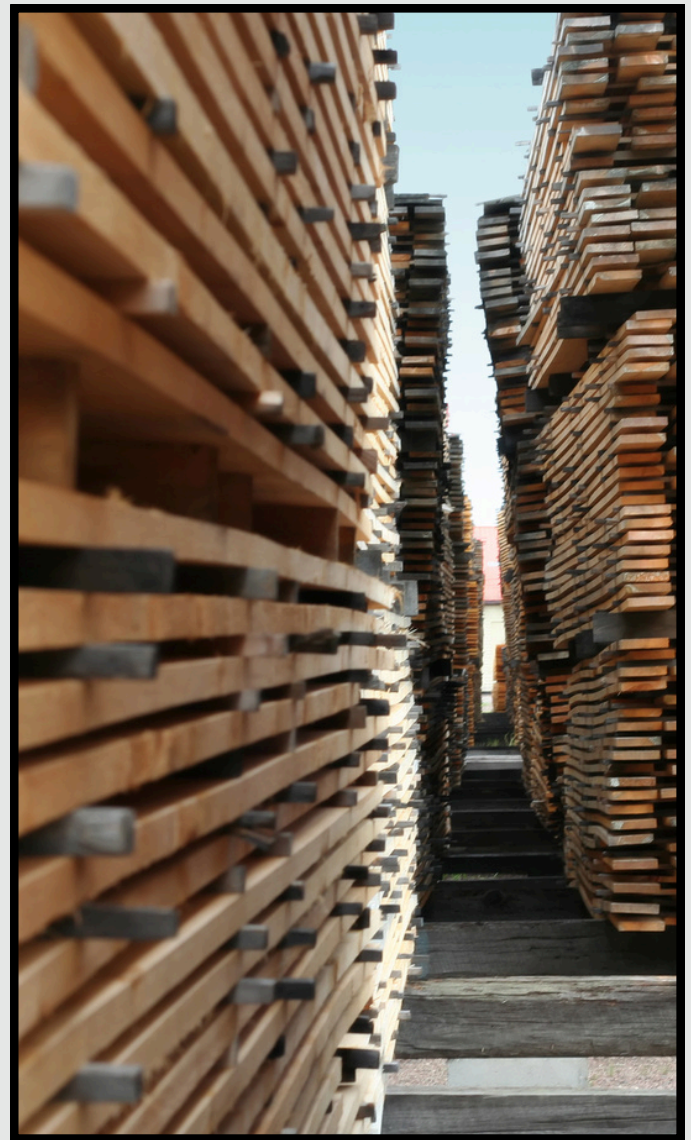
At Brenlo, our friendly sales team invites you to explore our extensive selection of moldings and doors. Share an image, sample, or idea with us, and our expert team will bring it to life. With our exceptional craftsmanship and expertise, Brenlo can create anything out of wood to meet your vision.



# 2

## SOURCE CHECK

Our technical lumber team, working closely with our skilled manufacturing experts, carefully prepares every resource needed for your order, ensuring exceptional quality and dependable availability. Key factors such as thickness, wood species, quantity, and design are thoughtfully considered at every step of the process.

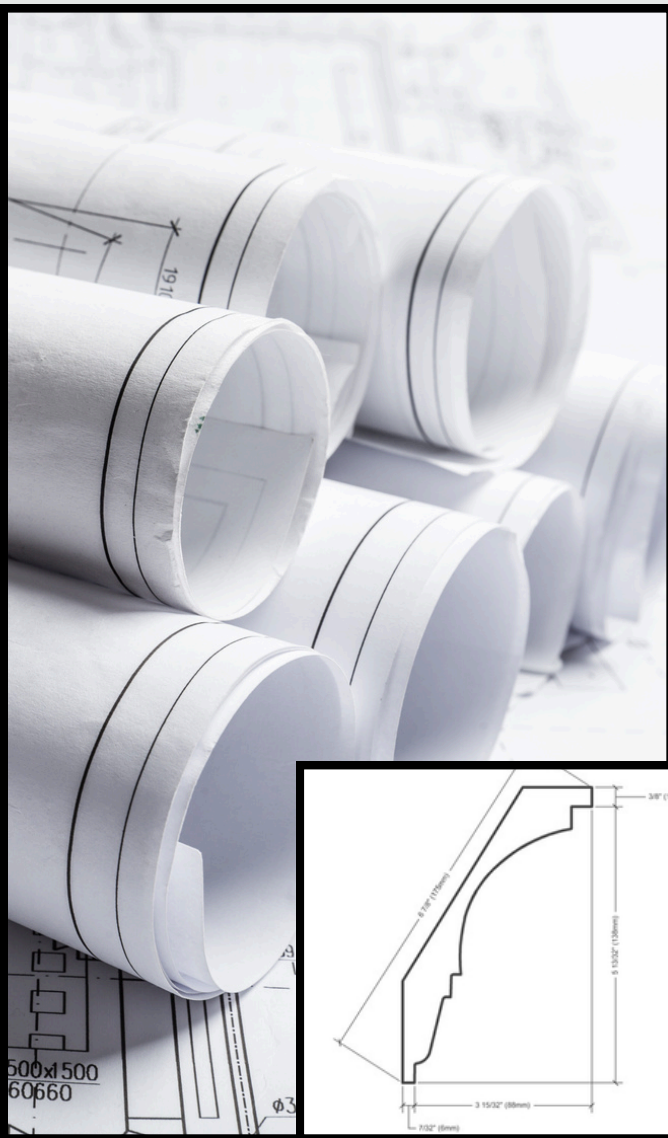




# 3

## CAD DRAWING CREATION

Once the quote is priced, a detailed CAD drawing is created to bring your vision to life. This drawing ensures precision and allows you to review and approve every detail before moving forward, ensuring the final product meets your exact specifications.



# 4

## TURNING VISION INTO REALITY

With the quote finalized, it's ready for your review and approval. This step ensures all details align with your vision and project requirements, providing complete transparency before moving forward to the next stage.



## 5

## THE FINAL TOUCH



In the final step, the detailed quote and drawings are meticulously reviewed, finalized, and submitted for approval to ensure every detail aligns with your vision. Once approval is received, the customization process begins, transforming your vision into a polished and high-quality finished product.





# The Inspire Series Brings Flexibility to New Technology

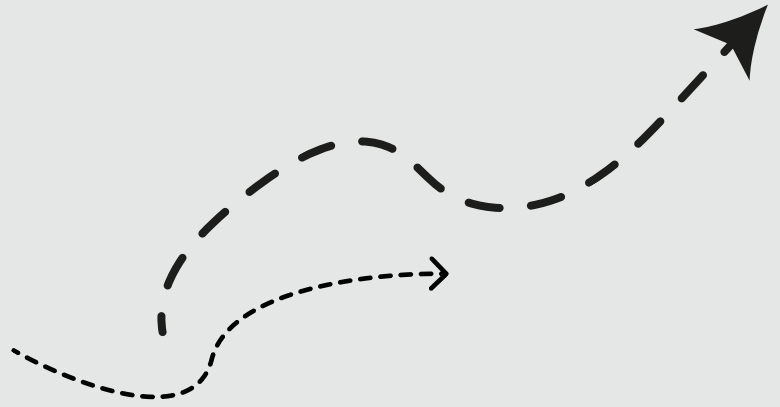


PHOTO BY: BRENLO MARKETING

This month, discover our top picks in luxury moldings



# TAMBOUR FLEXIBLE SHEET

Brenlo's new Inspire Series offers flexible, versatile moulding solutions for modern interiors. Designed to adapt to various styles, this collection empowers designers and homeowners to add distinctive, high-quality accents to any space, blending flexibility with Brenlo's signature quality.

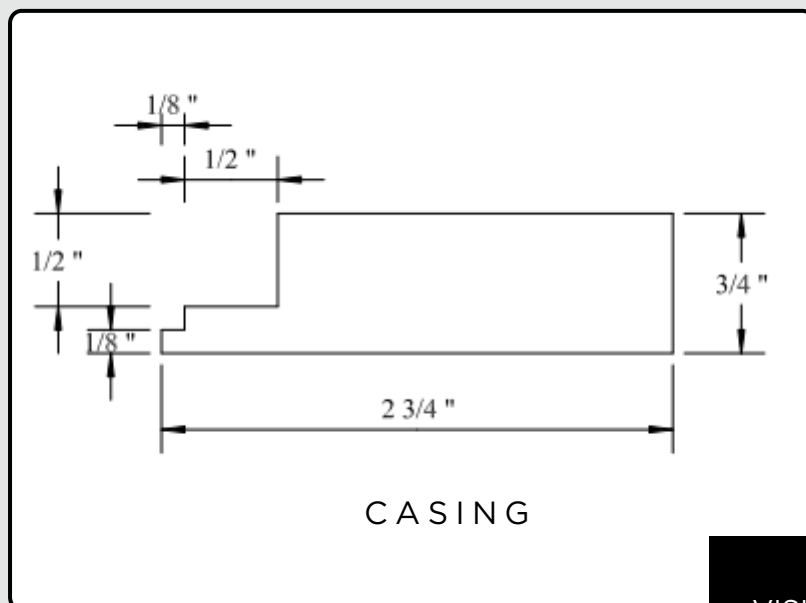
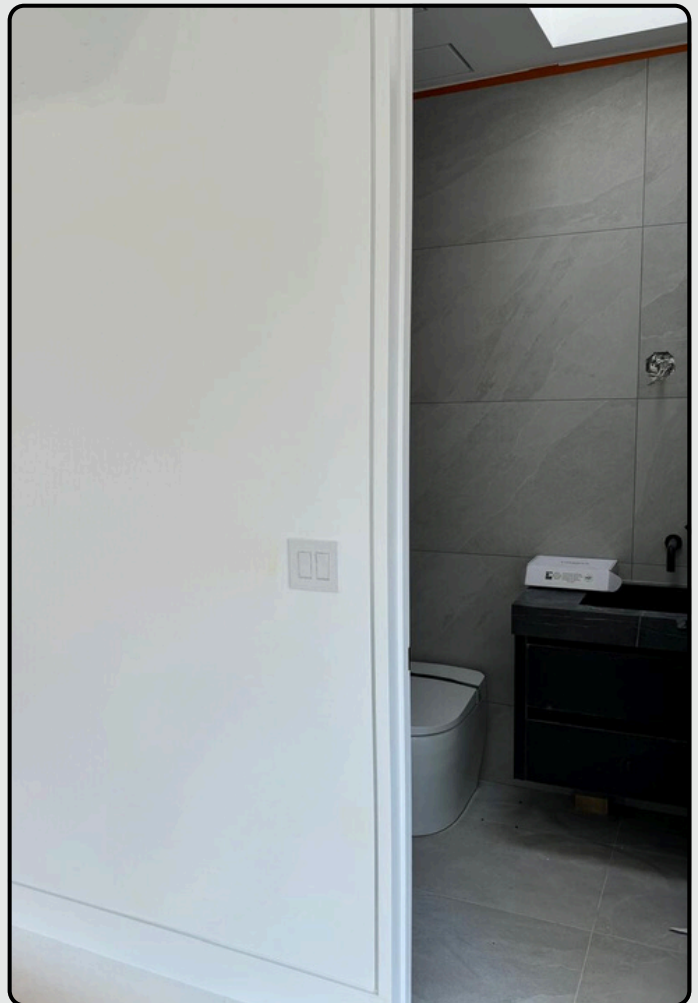


*EXCLUSIIVELY AVAILABLE IN THE  
INPSIRE SERIES 1,2,3,7,8,9*



# Signature Product Spotlight

Concealed casing is gaining popularity in both architectural and interior design for its sleek, minimalist look. By integrating the casing flush with the wall, this approach creates a seamless transition from wall to floor, eliminating the traditional trim line that can disrupt a space's flow. This design choice highlights clean lines and lets other elements, like furniture and wall textures, take center stage. Concealed trim delivers a refined, modern aesthetic that aligns with contemporary trends, making it the perfect choice for spaces that aim to feel sophisticated and uncluttered.



VISIT [WWW.BRENLO.COM](http://WWW.BRENLO.COM) TO SPEAK TO OUR SALES TEAM

## EMPLOYEE SPOTLIGHT

Since joining Brenlo as a Logistics Coordinator four months ago, Vandna has thrived in the collaborative environment, enjoying the strong teamwork that drives success. Her key achievement has been streamlining logistics to improve customer service and reduce delivery times, achieving greater efficiency and cost savings through new strategies and partnerships with couriers.

Motivated by the challenges of problem-solving, Vandna takes pride in contributing to Brenlo's growth. Colleagues also appreciate her positive attitude and find her a pleasure to work with. Outside of work, she enjoys cooking as a creative outlet, exploring new recipes to unwind. Vandna is excited to continue her journey with Brenlo and looks forward to making an even greater impact.



*Vandna Vandna*

LOGISTICS CO-ORDINATOR



SHOWROOM  
65 WORCESTER ROAD, TORONTO, ON M9W 5N7  
P: 416-749-6857  
E: FROGBOARD@BRENLO.CA



## STEPPING INTO A NEW ERA **FROGBOARD**

A revolutionary product made up of upcycled rice hulls, making it durable, strong, water-resistant, sustainable, and indistinguishable from natural wood. Built for interior and exterior applications, **Frogboard** can be used in a range of applications.



### **FROGBOARD** is **easy to handle and install.**

It can be effortlessly processed with standard woodworking tools and accepts screws and nails readily with a flush finish. With its **thermoformable** quality, it is a perfect fit for curved applications.



- LIMITED LIFETIME WARRANTY
- WATER- RESISTANT
- STAIN, PAINT, OR PRIME
- WIDE RANGE OF USAGE
- SUSTAINABLE
- THERMAFORMALBLE



# Stay Connected

**HOURS OF OPERATION**  
7:30AM-4:30PM - MON - FRI

**SHOWROOM ADDRESS**  
65 WORCESTER RD,  
ETOBICOKE, ON M9W 5N7

**NEXT DAY DELIVERY**  
AVAILABLE FOR ORDERS  
OVER \$350

**ORDER DESK & PICK UP**  
SAME-DAY NOW AVAILABLE

**REACH US**  
PHONE: +1 (416)- 749-6857  
EMAIL: SALES@BRENLO.CA

---

VISIT US ONLINE

[WWW.BRENLO.COM](http://WWW.BRENLO.COM)



PLEASE CONTACT [CVALENZUELA@BRENLO.CA](mailto:CVALENZUELA@BRENLO.CA) FOR ANY LUNCH AND LEARN OPPOTUNITIES